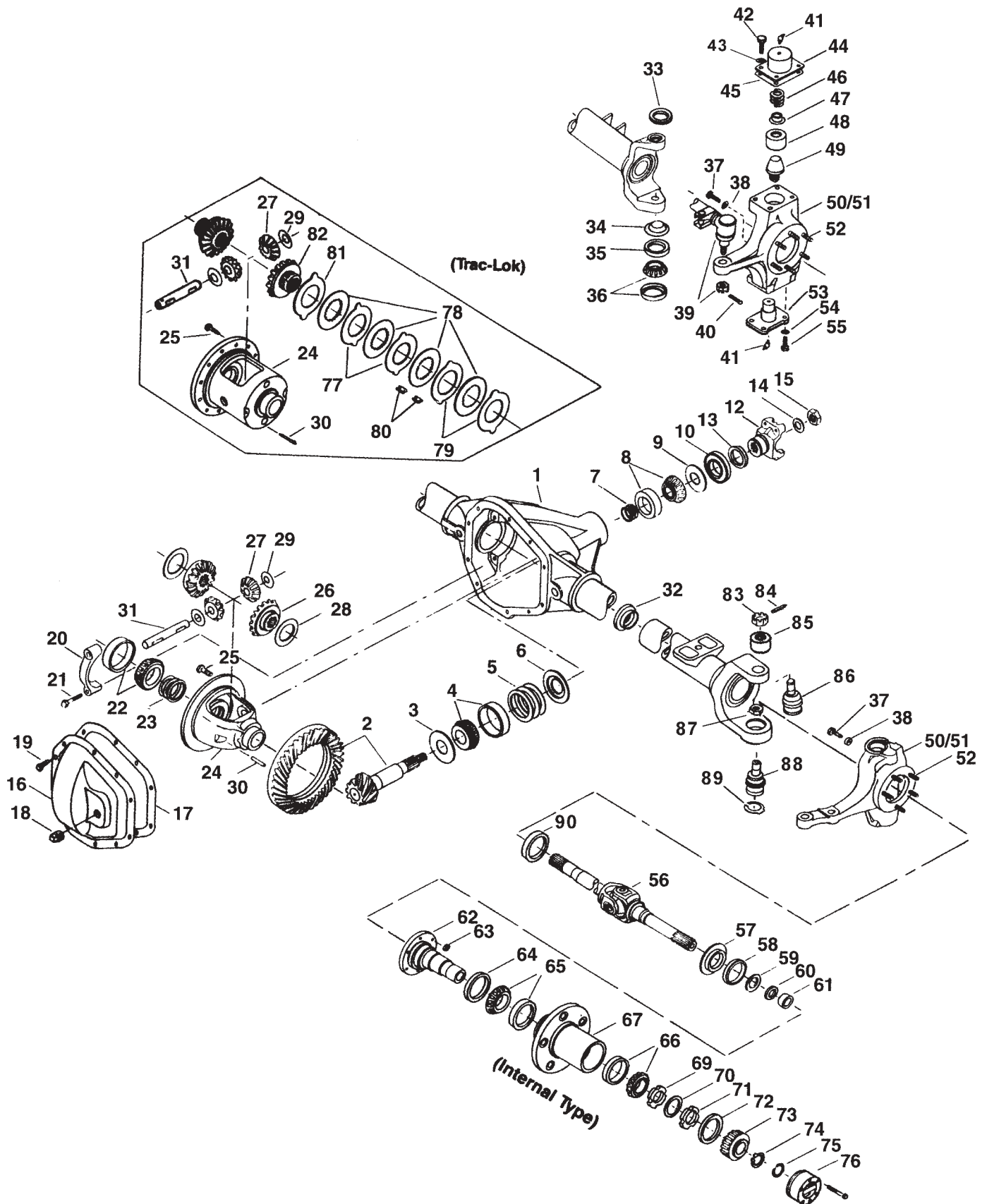


**Ford 1978-1998**

**Model 60 /248 Front Axles for**

**F-250, F-350**

# Ford Model 60 /248 Front Axles Exploded View



# Ford Model 60 /248 Front Axles

## Parts Listing

ITEM NO.	PART NUMBER	DESCRIPTION	ITEM NO.	PART NUMBER	DESCRIPTION
1	— <sup>(3)</sup>	Housing – Axle Service	47	620180	Spring Retainer
2	— <sup>(1)</sup>	Drive Pinion & Gear Assembly	48	41886	Bushing – King Pin
3	34643	Slinger – Inner Pinion	49	37302	King Pin
4	706046X	KIT – Inner Pinion Bearing	50	— <sup>(3)</sup>	Right Knuckle
5	—	Inner Pinion Bearing Shims	51	— <sup>(3)</sup>	Left Knuckle
	706375X	PKG – Diff & Pinion Bearing Shim (inc items 5, 7, 14, 15, 17, 23)	52	— <sup>(2)</sup>	Bolt – Hex
			53	37299	King Pin Bearing Cap – Lower
6	30982	Baffle – Pinion Bearing	54	500357-13	Lockwasher (King Pin Cap – Lower)
	706359X	PKG – Pinion Bearing Shim (inc items 5, 7, 14, 15, 17)	55	500412-13	Bolt – Hex (King Pin Cap – Lower)
			56	— <sup>(1)</sup>	Shaft & Joint Assembly
7	—	Outer Pinion Bearing Shims (see shim packages)	57	— <sup>(2)</sup>	Slinger – Spindle Yoke
				— <sup>(2)</sup>	KIT – Spindle Seal & Bearing (inc items 58, 59, 60, 61)
8	706045X	KIT – Outer Pinion Bearing		— <sup>(2)</sup>	KIT – Spindle (inc 58, 59, 60, 61, 62)
9	42737	Thrustwasher – Bearing		— <sup>(2)</sup>	Oil Seal
10	— <sup>(2)</sup>	Pinion Seal	58	— <sup>(2)</sup>	Spacer – Wheel Bearing Spindle
11	— <sup>(2)</sup>	PKG – End Yoke Seal (inc 10, 13)	59	— <sup>(2)</sup>	Oil Seal (block-vee)
12	— <sup>(2)</sup>	End Yoke or Assembly (inc 13)	60	— <sup>(2)</sup>	Needle Bearing Assembly
13	— <sup>(2)</sup>	Slinger – End Yoke	61	620063	Spindle – Wheel Bearing
14	30275	Washer – Pinion Nut	62	620086	Nut – Brake Mounting
15	30271	Pinion Nut	63	36805	Oil Seal
	— <sup>(2)</sup>	KIT – Carrier Cover (inc 16, 18, 19)	64	48816	KIT – Inner Wheel Bearing
16	— <sup>(2)</sup>	Carrier Cover	65	706411X	KIT – Outer Wheel Bearing
17	34687	Gasket – Carrier Cover	66	706074X	Wheel Hub
18	— <sup>(2)</sup>	Plug – Carrier Cover	67	— <sup>(3)</sup>	Thrustwasher – Wheel Bearing
19	34822	Bolt – Carrier Cover (qty 10)	N.I.	— <sup>(2)</sup>	Spindle Nut or Nut & Pin Assembly
20	— <sup>(3)</sup>	Differential Bearing Cap	69	— <sup>(2)</sup>	Lockwasher – Wheel Bearing Nut
21	48632-1	Bolt – Differential Bearing Cap	70	— <sup>(2)</sup>	Spindle Nut
22	706047X	KIT – Differential Bearing	71	— <sup>(2)</sup>	Spacer
23	706378X	PKG – Diff Bearing Shim (inc 17)	72	— <sup>(2)</sup>	Gear – Axle Drive
24	— <sup>(4)</sup>	Case – Differential	73	— <sup>(2)</sup>	Thrustwasher Package
25	— <sup>(2)</sup>	Bolt – Drive Gear (qty 12)		— <sup>(2)</sup>	Snap Ring
26	35625	Gear – Differential (std)	74	— <sup>(2)</sup>	Snap Ring
27	34367	Pinion – Differential	75	— <sup>(2)</sup>	Hub Cap
28	34729	Thrustwasher – Diff Gear (std)	76	— <sup>(2)</sup>	Hub Lock Assembly
29	34730	Thrustwasher – Diff Pinion (std-t/l)		— <sup>(3)</sup>	KIT – Differential Plate & Disc (t/l) (inc items 77, 78, 79, 80, 81)
30	44810	Lock – Differential Shaft		707083X	Plate – Differential Pressure
31	30263	Shaft – Differential			Disc – Differential
32	— <sup>(2)</sup>	Seal & Guide Tube	77	— <sup>(4)</sup>	Plate – Differential
	— <sup>(2)</sup>	KIT – King Pin Parts (inc 33,34,35,36)	78	— <sup>(4)</sup>	Clip – Differential Clutch
33	— <sup>(2)</sup>	King Pin Seal – Upper	79	— <sup>(4)</sup>	Spacer – Plate Preload
34	37305	Grease Retainer	80	40835	Gear – Differential (t/l)
35	41777	Oil Seal	81	— <sup>(4)</sup>	KIT – Socket Assembly (inc items 83, 84, 86, 87, 88, 89)
36	706150X	KIT – King Pin Bearing – Lower	82	35830	Nut – Hex Slotted
37	— <sup>(2)</sup>	Stop Screw		700238-2X	Cotter Pin
38	— <sup>(2)</sup>	Jam Nut			Bushing – Socket Design (Alternate Bushing Selection)
39	— <sup>(3)</sup>	Tie Rod Assembly	83	44101	Socket – Upper
40	— <sup>(3)</sup>	Cotter Pin	84	500024-8	Lock Nut
41	500175-1	Lube Fitting	85	44507	Socket – Lower
42	30875	Nut – Hex Tapered		— <sup>(5)</sup>	Snap Ring
43	— <sup>(3)</sup>	Lockwasher (King Pin Cap – Upper)	86	47184	Seal – Outer Tube
44	620083	Steering Arm (LH only)	87	44133	
	620132	King Pin Cap – Upper (RH only)	88	47185	
45	37307	Gasket – King Pin Cap	89	620343	
46	37300	Spring – Pressure	90	— <sup>(2)</sup>	

N.I. = Not Illustrated

(1) See "Bill of Material Table" on next page

(2) See "Variable Parts Table" within this section

(3) Contact Vehicle Manufacturer

(4) Not Sold Separately

(5) See Camber/Casting Bushing Table at the back of the Ford section of this catalog

# Ford Model 60 /248 Front Axles

## Bill of Material Table

Axle			Axle Kits				Shaft & Joint Assy.	
Bill of Material	Diff. Type	Ratio	Ring Gear & Pinion Kit <sup>(7)</sup>	Differential			Right Hand Shaft Assy.	Left Hand Shaft Assy.
				Case Assy. Kit <sup>(8)</sup>	Case Kit	Inner Parts Kit		
<b>1978-79 F-250 &amp; F-350 (Snow Fighter)</b>								
610023-1	Standard	3.54	700020-1	706180X	706040X	706702X	660048-1	660048-2
610023-2	Standard	3.54	700020-1	706180X	706040X	706702X	660048-1	660048-2
610023-4	Trac Lok	3.54	700020-1	707090-4X	708014	707086X	660048-1	660048-2
610023-5	Standard	4.10	700020-2	706180X	706040X	706702X	660048-1	660048-2
610023-6	Standard	4.10	700020-2	706180X	706040X	706702X	660048-1	660048-2
610023-8	Trac Lok	4.10	700020-2	707090-4X	708014	707086X	660048-1	660048-2
610023-9	Standard	4.10	700020-2	706180X	706040X	706702X	660048-1	660048-2
610023-10	Standard	3.54	700020-1	706180X	706040X	706702X	660048-1	660048-2
610023-11	Standard	3.54	700020-1	706180X	706040X	706702X	660048-1	660048-2
610023-12	Standard	4.10	700020-2	706180X	706040X	706702X	660048-1	660048-2
610023-13	Standard	4.10	700020-2	706180X	706040X	706702X	660048-1	660048-2
<b>1985 F-350</b>								
610220-2	Standard	3.54	700020-1	706180X	706040X	706702X	660048-4	660048-5
610220-4	Standard	4.10	700020-2	706180X	706040X	706702X	660048-4	660048-5
610220-8	Standard	4.10	700020-2	706180X	706040X	706702X	660048-4	660048-5
<b>1986-88 F-350 Monobeam DRW</b>								
610255-1	Standard	3.54	700020-1	706180X	706040X	706702X	660048-4	660048-5
610255-2	Standard	4.10	700020-2	706180X	706040X	706702X	660048-4	660048-5
610255-3	Standard	4.10	700020-2	706180X	706040X	706702X	660048-4	660048-5
<b>1988 F-350 Monobeam SRW</b>								
610305-1	Standard	3.54	700020-1	706180X	706040X	706702X	660048-4	660048-5
610305-2	Standard	4.10	700020-2	706180X	706040X	706702X	660048-4	660048-5
<b>1988 1/2-91 1/2 F-350 Monobeam SRW</b>								
610313-1	Standard	3.54	700020-1	706180X	706040X	706702X	76659-2X	76659-1X
610313-2	Standard	4.10	700020-2	706180X	706040X	706702X	76659-2X	76659-1X
610313-3	Standard	4.10	700020-2	706180X	706040X	706702X	76659-2X	76659-1X
<b>1992 F-350 (Uses Socket Assy Instead of King Pin Assy)</b>								
610371-1	Standard	3.54	700020-1	706180X	706040X	706702X	76659-2X	76659-1X
610371-2	Standard	4.10	700020-2	706180X	706040X	706702X	76659-2X	76659-1X
610371-3	Standard	4.10	700020-2	706180X	706040X	706702X	76659-2X	76659-1X
610371-4	Standard	3.54	700020-1	706180X	706040X	706702X	76659-2X	76659-1X
610371-5	Standard	4.10	700020-2	706180X	706040X	706702X	76659-2X	76659-1X
610371-6	Standard	4.10	700020-2	706180X	706040X	706702X	76659-2X	76659-1X
<b>1993-93 1/2 F-350</b>								
610432-1	Standard	3.54	700020-1	706180X	706040X	706702X	76659-2X	76659-1X
610432-2	Standard	4.10	700020-2	706180X	706040X	706702X	76659-2X	76659-1X
610432-3	Standard	4.10	700020-2	706180X	706040X	706702X	76659-2X	76659-1X
610432-4	Standard	3.54	700020-1	706180X	706040X	706702X	76659-2X	76659-1X
610432-5	Standard	4.10	700020-2	706180X	706040X	706702X	76659-2X	76659-1X
610432-6	Standard	4.10	700020-2	706180X	706040X	706702X	76659-2X	76659-1X
<b>1994 F-350</b>								
610445-1	Standard	3.54	700020-1	706180X	706040X	706702X	76659-2X	76659-1X
610445-2	Standard	4.10	700020-2	706180X	706040X	706702X	76659-2X	76659-1X
610445-3	Standard	4.10	700020-2	706180X	706040X	706702X	76659-2X	76659-1X
610445-4	Standard	3.54	700020-1	706180X	706040X	706702X	76659-2X	76659-1X
610445-5	Standard	4.10	700020-2	706180X	706040X	706702X	76659-2X	76659-1X
610445-6	Standard	4.10	700020-2	706180X	706040X	706702X	76659-2X	76659-1X

(7) See Ring Gear & Pinion Kits in XGI Catalog for ratio & tooth combinations.

(8) See Differential Case Assy Kits in XGI Catalog for spline data & ratios.

## Ford Model 60 /248 Front Axles Bill of Material Table

Axle			Axle Kits				Shaft & Joint Assy.	
Bill of Material	Diff. Type	Ratio	Ring Gear & Pinion Kit <sup>(7)</sup>	Differential			Right Hand Shaft Assy.	Left Hand Shaft Assy.
				Case Assy. Kit <sup>(8)</sup>	Case Kit	Inner Parts Kit		
<b>1995 F-350</b>								
610460-1	Standard	3.54	700020-1	706180X	706040X	706702X	76659-2X	76659-1X
610460-2	Standard	4.10	700020-2	706180X	706040X	706702X	76659-2X	76659-1X
610460-3	Standard	4.10	700020-2	706180X	706040X	706702X	76659-2X	76659-1X
610460-4	Standard	3.54	700020-1	706180X	706040X	706702X	76659-2X	76659-1X
610460-5	Standard	4.10	700020-2	706180X	706040X	706702X	76659-2X	76659-1X
610460-6	Standard	4.10	700020-2	706180X	706040X	706702X	76659-2X	76659-1X
610460-7	Standard	3.54	700020-1	706180X	706040X	706702X	76659-2X	76659-1X
610460-8	Standard	4.10	700020-2	706180X	706040X	706702X	76659-2X	76659-1X
610460-9	Standard	4.10	700020-2	706180X	706040X	706702X	76659-2X	76659-1X
610460-10	Standard	3.54	700020-1	706180X	706040X	706702X	76659-2X	76659-1X
610460-11	Standard	4.10	700020-2	706180X	706040X	706702X	76659-2X	76659-1X
610460-12	Standard	4.10	700020-2	706180X	706040X	706702X	76659-2X	76659-1X
<b>1996 1/2-97 F-350</b>								
610610-1	Standard	3.54	700020-1	707460X	706040X	706702X	76659-2X	76659-1X
610610-2	Standard	4.10	700020-2	707460X	706040X	706702X	76659-2X	76659-1X
610610-3	Standard	4.10	700020-2	707460X	706040X	706702X	76659-2X	76659-1X
610610-4	Standard	3.54	700020-1	707460X	706040X	706702X	76659-2X	76659-1X
610610-5	Standard	4.10	700020-2	707460X	706040X	706702X	76659-2X	76659-1X
610610-6	Standard	4.10	700020-2	707460X	706040X	706702X	76659-2X	76659-1X
<b>1997 1/2-98 F-350</b>								
610741-1	Standard	3.54	700020-1	707460X	706040X	706702X	76659-2X	76659-1X
610741-2	Standard	4.10	700020-1	707460X	706040X	706702X	76659-2X	76659-1X
610741-3	Standard	4.10	700020-2	707460X	706040X	706702X	76659-2X	76659-1X
610741-4	Standard	3.54	700020-1	707460X	706040X	706702X	76659-2X	76659-1X
610741-5	Standard	4.10	700020-2	707460X	706040X	706702X	76659-2X	76659-1X
610741-6	Standard	4.10	700020-2	707460X	706040X	706702X	76659-2X	76659-1X

(7) See Ring Gear &amp; Pinion Kits in XGI Catalog for ratio &amp; tooth combinations.

(8) See Differential Case Assy Kits in XGI Catalog for spline data &amp; ratios.

# Ford Model 60 /248 Front Axles Variable Parts Listing

Kits & Parts - Use With All Applications							
Description & Item Number (Refer to "Exploded View" at the front of this section)			Bills of Material				
			610023	610220	610255 610305	610313	610371
1	Pinion Seal	10	42449	42449	42449	42449	610371
2	PKG – End Yoke Seal (inc 10, 13)	11	—	—	—	—	—
3	End Yoke or Assembly (inc 13)	12	2-4-4291X	2-4-5311X	2-4-8051X	2-4-8051X	2-4-8051X
4	Slinger – End Yoke	13	34592	34592	41195	41195	41195
5	KIT – Carrier Cover	-	700041	707002X	707002X	707233X	707233X
6	Carrier Cover	16	620079	620079	620079	43600-1	43600-1
7	Plug – Carrier Cover	18	36472	36472	36472	43180	43180
8	Bolt – Drive Gear (qty 12)	25	30266	30266	30266	30266	30266
9	Seal & Guide Tube	32	36487	36487	36487	36487	36487
10	KIT – King Pin Parts	-	706395X	707042X	707042X	707042X	—
11	King Pin Seal – Upper	33	620058	41778	41778	41778	—
12	Stop Screw	37	620143-3	620143-3	620143-3	620143-3	620143-3
13	Jam Nut	38	500381-3	500381-3	500381-3	500381-3	500381-3
14	Bolt – Hex	52	37759-2	37759-2	37759-2	37759-2	37759-1
15	Slinger – Spindle Yoke	57	37308	37308	37308	37308	37308
16	KIT – Spindle Seal & Bearing	-	700014	700014	700014	700014	708084
17	KIT – Spindle	-	700022	700022	700022	700022	708085
18	Oil Seal	58	37311	37311	37311	37311	50381
19	Spacer – Wheel Bearing Spindle	59	37312	37312	37312	37312	—
20	Oil Seal (block-vee)	60	620062	620062	620062	620062	44506
21	Thrustwasher – Wheel Bearing	N.I.	33734	33734	—	—	—
22	Spindle Nut or Nut & Pin Assembly	69	33732	33732	660568	660568	660568
23	Lockwasher – Wheel Bearing Nut	70	33733	33733	621028	621028	621028
24	Spindle Nut	71	33732	33732	621027	621027	621027
25	Spacer	72	37997	37997	—	—	—
26	Gear – Axle Drive	73	37994	37994	—	—	—
27	Thrustwasher Package	-	—	—	—	—	—
28	Snap Ring	74	620142	620142	620142	620142	620142
29	Snap Ring	75	—	—	620097	620097	620097
30	Hub Cap	76	620194	620194	—	—	—
31	Seal – Outer Tube	90	—	—	—	50492	50492

## Ford Model 60 /248 Front Axles Variable Parts Listing

Kits & Parts - Use With All Applications							
Description & Item Number (Refer to "Exploded View" at the front of this section)			Bills of Material				
			610432	610445	610460	610610	610741
1	Pinion Seal	10	42449	42449	42449	42449	—
2	PKG – End Yoke Seal (inc 10, 13)	11	—	—	—	—	701164X
3	End Yoke or Assembly (inc 13)	12	2-4-8051X	2-4-8051X	2-4-8051X	2-4-8051X	2-4-8251
4	Slinger – End Yoke	13	41195	41195	41195	41195	—
5	KIT – Carrier Cover	-	707233X	707233X	707233X	707233X	707233X
6	Carrier Cover	16	43600-1	43600-1	43600-1	43600-1	43600-1
7	Plug – Carrier Cover	18	43180	43180	43180	43180	43180
8	Bolt – Drive Gear (qty 12)	25	40638	40638	40638	40638	40638
9	Seal & Guide Tube	32	48773	48773	48773	48773	48773
10	KIT – King Pin Parts	-	—	—	—	—	—
11	King Pin Seal – Upper	33	—	—	—	—	—
12	Stop Screw	37	620143-3	620143-3	—	—	—
13	Jam Nut	38	500381-5	500381-5	—	—	—
14	Bolt – Hex	52	37759-1	37759-1	37759-1	37759-1	37759-1
15	Slinger – Spindle Yoke	57	—	—	—	—	—
16	KIT – Spindle Seal & Bearing	-	708084	708084	708084	708084	708084
17	KIT – Spindle	-	708085	708085	708085	708085	708085
18	Oil Seal	58	50381	50381	50381	50381	50381
19	Spacer – Wheel Bearing Spindle	59	—	—	—	—	—
20	Oil Seal (block-vee)	60	44506	44506	44506	44506	44506
21	Thrustwasher – Wheel Bearing	N.I.	—	—	—	—	—
22	Spindle Nut or Nut & Pin Assembly	69	660568	660568	660568	—	—
23	Lockwasher – Wheel Bearing Nut	70	621028	621028	621028	—	—
24	Spindle Nut	71	621027	621027	621027	—	—
25	Spacer	72	—	—	—	—	—
26	Gear – Axle Drive	73	—	—	—	—	—
27	Thrustwasher Package	-	—	—	—	—	701132X
28	Snap Ring	74	—	—	—	—	620142
29	Snap Ring	75	620097	620097	620097	620097	620097
30	Hub Cap	76	—	—	—	—	—
31	Seal – Outer Tube	90	50492	50492	—	50492	50492