

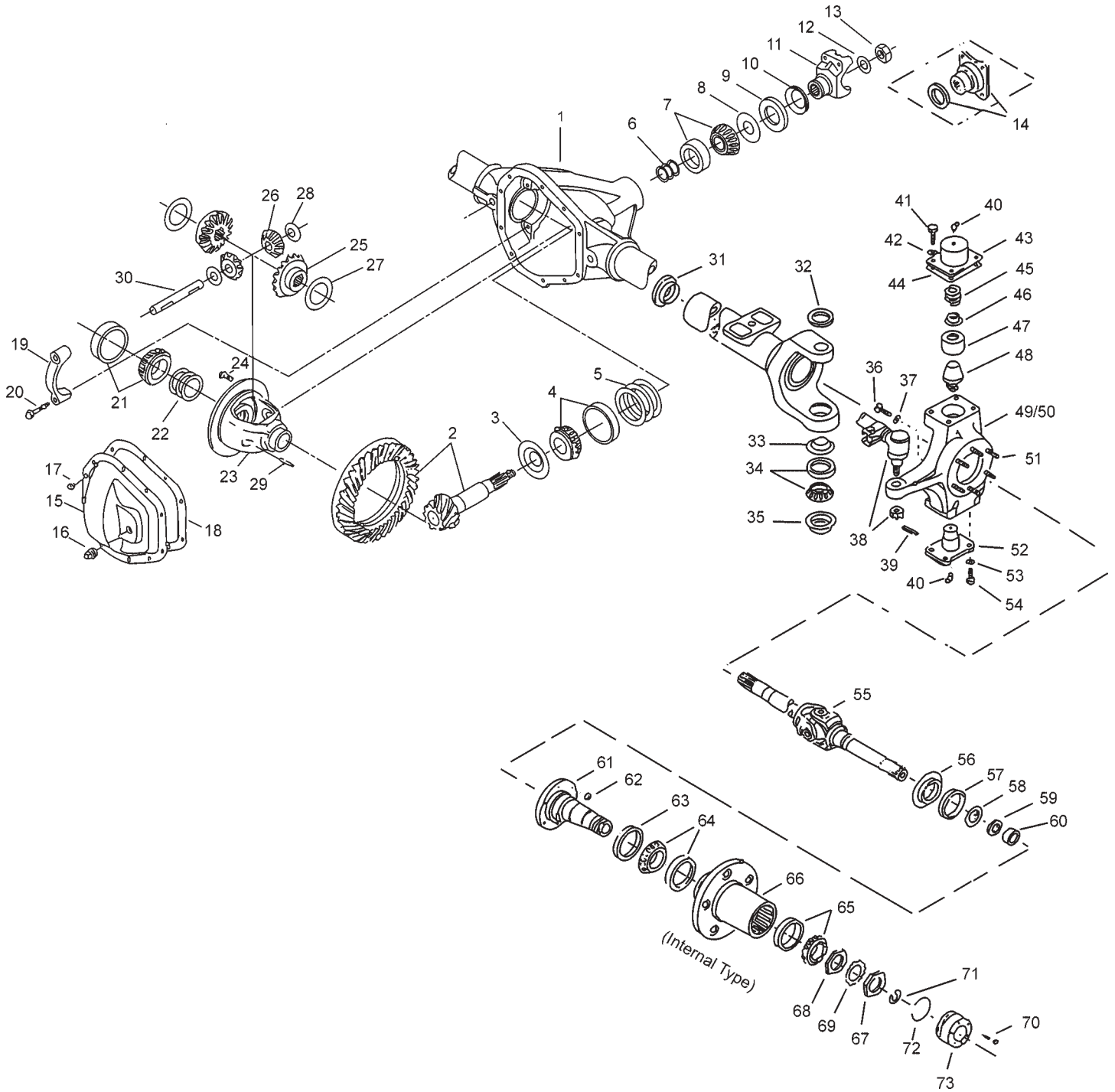
Dodge / Chrysler 1987-1993 1/2

Model 61 Front Axles for

D-600, D-700

Dodge Model 61 Front Axles Exploded View

X510-9



Dodge Model 61 Front Axles Parts Listing

ITEM NO.	PART NUMBER	DESCRIPTION	ITEM NO.	PART NUMBER	DESCRIPTION
1	— ⁽³⁾	Housing – Axle Service	36	620143-3	Stop Screw
2	— ⁽¹⁾	Drive Pinion & Gear Assembly	37	500381-5	Jam Nut
3	34643	Slinger – Inner Pinion Bearing	38	— ⁽⁵⁾	Tie Rod Assembly
4	706046X	KIT – Inner Pinion Bearing	39	— ⁽⁵⁾	Cotter Pin
5	— ⁽⁴⁾	Inner Pinion Bearing Shims (see shim packages)	40	500175-4	Lube Fitting
			41	30875	Nut – Hex Tapered
6	— ⁽⁴⁾	Outer Pinion Bearing Shims (see shim packages)	42	—	Lockwasher – King Pin Cap (upper)
	708020	PKG – Diff & Pinion Bearing Shim (inc items 5, 6, 13, 16, 22)	43	38520	Arm – Steering (LH only)
	706359X	PKG – Pinion Bearing Shim (inc items 5, 7, 12, 13, 16)	44	37307	Gasket – King Pin Cap
7	706045X	KIT – Outer Pinion Bearing	45	620132	King Pin Cap (upper – RH only)
8	42737	Thrustwasher – Bearing	46	37300	Spring – Pressure
9	42449	Seal – Pinion Oil	47	620180	Spring Retainer
10	232752	Slinger – End Yoke	48	41886	King Pin Bushing
11	2-4-8391-1X	End Yoke Assembly (inc 10)	49	37302	King Pin
12	30275	Washer – Pinion Nut	50	— ⁽³⁾	Right Knuckle
13	30271	Pinion Nut	51	— ⁽³⁾	Left Knuckle
14	—	Companion Flange Assembly	52	37879	Bolt – Hex
	707229X	KIT – Carrier Cover (inc items 15, 16, 17)	53	37299	King Pin Bearing Cap – Lower
15	43600-1	Carrier Cover	54	500357-13	Lockwasher – King Pin Cap (lower)
16	43180	Plug – Carrier Cover	55	500412-13	Bolt – Hex (King Pin Cap – lower)
17	34822	Bolt – Carrier Cover (qty 10)	56	907967-1	Shaft & Joint Assembly – RH
18	34687	Gasket – Carrier Cover		907967-2	Shaft & Joint Assembly – LH
19	— ⁽³⁾	Differential Bearing Cap	57	37308	Slinger – Spindle Yoke
20	48632-1	Bolt – Differential Bearing Cap		700014	KIT – Spindle Seal & Bearing (inc items 57, 58, 59, 60)
21	706047X	KIT – Differential Bearing		700013	KIT – Spindle (inc items 57, 58, 59, 60, 61)
22	708012	PKG – Diff Bearing Shim (inc 18)	58	620062	Oil Seal
23	— ⁽¹⁾	Case – Differential	59	37312	Spacer – Wheel Bearing Spindle
24	40638	Bolt – Drive Gear (qty 12)	60	37311	Oil Seal (block-vee)
25	35625	Gear – Differential	61	620063	Needle Bearing Assembly
26	34367	Pinion – Differential	62	620061	Spindle – Wheel Bearing
27	34729	Thrustwasher – Differential Gear	63	36880	Nut – Brake Mounting
28	34730	Thrustwasher – Differential Pinion	64	48816	Oil Seal
29	44810	Lock – Differential Shaft	65	706411X	KIT – Inner Wheel Bearing
30	30263	Shaft – Differential	66	706074X	KIT – Outer Wheel Bearing
31	36487	Seal & Guide Tube	67	— ⁽³⁾	Wheel Hub
	706395X	KIT – King Pin Parts (inc items 32, 33, 34, 35)	68	— ⁽²⁾	Spindle Nut
32	620058	King Pin Seal (upper)	69	— ⁽²⁾	Spindle Nut or Nut/Pin Assembly
33	37305	Grease Retainer	70	— ⁽²⁾	Wheel Bearing Lockwasher
35	41777	Oil Seal	71	— ⁽²⁾	Screw or Screw / Lockwasher Assy
			72	37730	Snap Ring (small)
			73	— ⁽²⁾	Snap Ring (large)
				— ⁽³⁾	Hub Lock Assembly

(1) See "Bill of Material Table" on next page

(2) See "Variable Parts Table" within this section

(3) Contact Vehicle Manufacturer

(4) Not Sold Separately

(5) See Spicer Chassis Catalog for part number and additional steering parts

Dodge Model 61 Front Axles

Bill of Material Table

Axle			Axle Kits				Shaft & Joint Assy.	
Bill of Material	Diff. Type	Ratio	Ring Gear & Pinion Kit ⁽⁷⁾	Differential			Right Hand Shaft Assy.	Left Hand Shaft Assy.
				Case Assy. Kit ⁽⁸⁾	Case Kit	Inner Parts Kit		
1987-88 D-600 & D-700								
610265-1	Standard	3.07	706661-11X	706180X	706040X	706702X	907967-1	907967-2
610265-2	Standard	3.54	706033-1X	707072X	706400X	706702X	907967-1	907967-2
610265-3	Standard	3.07	706661-11X	706180X	706040X	706702X	907967-1	907967-2
610265-4	Standard	3.54	706033-1X	706180X	706400X	706702X	907967-1	907967-2
1989 D-600 & D-700								
610333-1	Standard	3.07	706661-11X	706180X	706040X	706702X	907967-1	907967-2
610333-2	Standard	3.54	706033-1X	707072X	706400X	706702X	907967-1	907967-2
610333-3	Standard	3.07	706661-11X	706180X	706040X	706702X	907967-1	907967-2
610342-1	Standard	3.07	706661-11X	706180X	706040X	706702X	907967-1	907967-2
610342-2	Standard	3.54	706033-1X	707072X	706400X	706702X	907967-1	907967-2
610342-3	Standard	3.07	706661-11X	706180X	706040X	706702X	907967-1	907967-2
610342-4	Standard	3.54	706033-1X	707072X	706400X	706702X	907967-1	907967-2
1991-92 D-600 & D-700								
610358-1	Standard	3.07	706661-11X	706180X	706040X	706702X	907967-1	907967-2
610358-2	Standard	3.54	706033-1X	707072X	706400X	706702X	907967-1	907967-2
610358-3	Standard	3.07	706661-11X	706180X	706040X	706702X	907967-1	907967-2
610358-4	Standard	3.54	706033-1X	707072X	706400X	706702X	907967-1	907967-2
1992-92 1/2 D-600 & D-700								
610431-1	Standard	3.07	706661-11X	706180X	706040X	706702X	907967-1	907967-2
1993-93 1/2 D-600 & D-700								
610406-1	Standard	3.07	706661-11X	706180X	706040X	706702X	907967-1	907967-2
610406-2	Standard	3.07	706661-11X	706180X	706040X	706702X	907967-1	907967-2
610406-3	Standard	3.07	706661-11X	706180X	706040X	706702X	907967-1	907967-2
610406-4	Standard	3.07	706661-11X	706180X	706040X	706702X	907967-1	907967-2

(7) See Ring Gear & Pinion Kits in XGI Catalog for ratio & tooth combinations.

(8) See Differential Case Assy Kits in XGI Catalog for spline data & ratios.

Variable Parts Listing

Kits & Parts - Use With All Applications						
Description & Item Number (Refer to "Exploded View" at the front of this section)			Bills of Material			
			610265	610333	610342 610358 610406 610431	
1	Spindle Nut	67	35270	35270	621027	
2	Spindle Nut or Nut/Pin Assembly	68	35270	—	660568	
3	Wheel Bearing Lockwasher	69	35269	35269	621028	
4	Screw or Screw/Lockwasher Assy	70	37734	37734	45886	
5	Snap Ring (large)	72	—	—	620097	