

Dodge / Chrysler 1979-1998 1/2

Model 60 /248 Rear Axles for

B-300 Maxivan HD

B-600

C-300

D-200, D-300, D-600

D-700, D-800

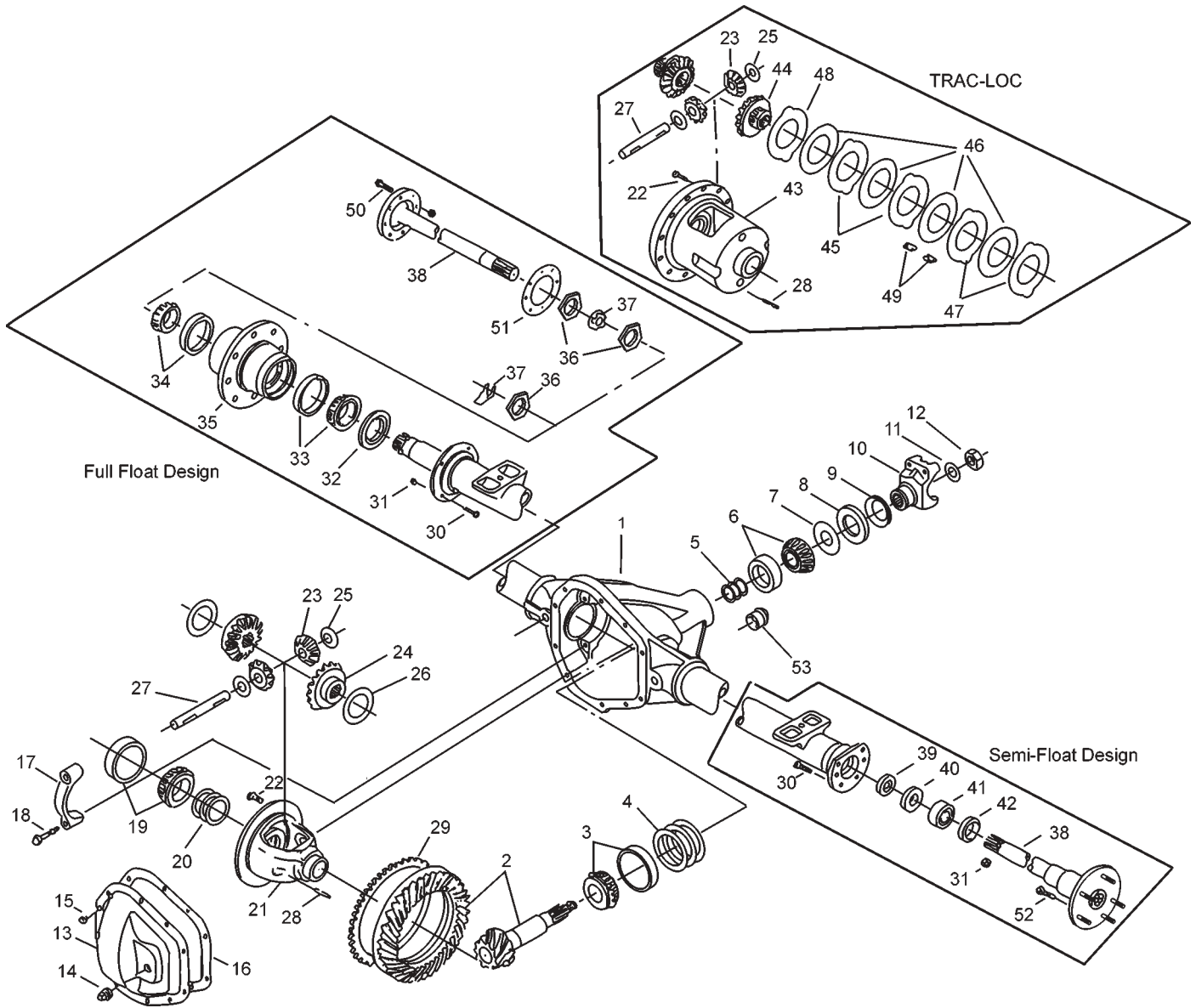
MB-300 Dual Wheel HD

W-200 HD

Rail Maintenance

High Performance Racing

Dodge Model 60 /248 Rear Axles Exploded View



Dodge Model 60 /248 Rear Axles Parts Listing

ITEM NO.	PART NUMBER	DESCRIPTION	ITEM NO.	PART NUMBER	DESCRIPTION
1	— ⁽³⁾	Housing – Axle Service	25	34730	Thrustwasher – Differential Pinion
2	— ⁽¹⁾	Drive Pinion & Gear Assembly	26	34729	Thrustwasher – Differential Gear (std)
3	706046X	KIT – Inner Pinion Bearing	27	30263	Shaft – Differential
	708020	PKG – Diff & Pinion Bearing Shim (inc items 4, 5, 12, 16, 20)	28	44810	Lock – Differential Shaft
	706359X	PKG – Pinion Bearing Shim (inc items 4, 5, 11, 12, 16)	29	42928	Tone Ring (ABS)
4	— ⁽⁴⁾	Inner Pinion Shims (see shim packages)	30	— ⁽³⁾	Bolt – Brake Mounting
5	— ⁽⁴⁾	Outer Pinion Shims (see shim packages)	31	— ⁽³⁾	Nut – Brake Mounting
6	706045X	KIT – Outer Pinion Bearing	32	— ⁽²⁾	Seal – Hub
7	42737	Thrustwasher	33	— ⁽³⁾	KIT – Inner Wheel Bearing
8	42449	Seal – Pinion Oil	34	— ⁽³⁾	KIT – Outer Wheel Bearing
9	34592	Slinger – End Yoke	35	— ⁽³⁾	Wheel Hub
10	— ⁽²⁾	End Yoke Assembly (inc 9)	36	— ⁽²⁾	Spindle Nut
11	30275	Washer – Pinion Nut	37	— ⁽²⁾	Lockwasher / Locking Wedge
12	30271	Pinion Nut	38	— ⁽¹⁾	Shaft – Axle Flanged Drive
	— ⁽²⁾	KIT – Carrier Cover (inc items 13, 14, 15)		706767X	KIT – Unit Brg & Seal (semi-float) (inc items 39, 40, 41, 42)
13	— ⁽²⁾	Carrier Cover	39	35239	Oil Seal
14	43180	Plug – Carrier Cover	40	39378	Oil Seal Retainer
15	34822	Bolt – Carrier Cover (qty 10)	41	565903	Bearing Assembly
16	34687	Gasket – Carrier Cover	42	36797	Bearing Retainer
	38615	RTV Silicone Sealant	43	— ⁽¹⁾	Case – Differential (t/l)
17	— ⁽³⁾	Differential Bearing Cap	44	35803	Gear – Differential (t/l)
18	48632-1	Bolt – Differential Bearing Cap		707083X	KIT – Disc & Plate (t/l)
19	706047X	KIT – Differential Bearing	45	— ⁽⁴⁾	Plate – Differential Pressure
20	708012	KIT – Differential Bearing Shim (inc 16)	46	— ⁽⁴⁾	Disc – Differential
21	— ⁽¹⁾	Case – Differential (std)	47	— ⁽⁴⁾	Plate – Diff (selective thickness)
22	— ⁽²⁾	Bolt – Drive Gear (qty 12)	48	— ⁽⁴⁾	Plate – Preload Spacer
23	34367	Pinion – Differential	49	40835	Clip – Differential Clutch Retainer
24	34394	Gear – Differential (std)	50	— ⁽³⁾	Cap Screw
			51	39697	Gasket
			52	38116	Bolt – Axle Shaft (semi-float)
			53	—	Collapsible Spacer

- (1) See "Bill of Material Table" on next page
(2) See "Variable Parts Table" within this section
(3) Contact Vehicle Manufacturer
(4) Not Sold Separately

Dodge Model 60 /248 Rear Axles

Bill of Material Table

Axle			Axle Kits				Shaft & Joint Assy.	
Bill of Material	Diff. Type	Ratio	Ring Gear & Pinion Kit ⁽⁷⁾	Differential			Right Hand Shaft Assy.	Left Hand Shaft Assy.
				Case Assy. Kit ⁽⁸⁾	Case Kit	Inner Parts Kit		
1979 B-300 Maxivan HD								
603920-1	Standard	4.10	706033-3X	706036X	706040X	706043X	35953-5	35953-6
603920-2	Standard	3.73	706033-2X	706036X	706040X	706043X	35953-5	35953-6
603920-3	Trac Lok	3.73	706033-2X	708013	708014	707084X	35953-5	35953-6
603920-4	Trac Lok	4.10	706033-3X	708013	708014	707084X	35953-5	35953-6
1979 D-200 & BD-600								
603917-1	Standard	3.54	706033-1X	706036X	706040X	706043X	43965-2	43965-3
603917-2	Standard	4.10	706033-3X	706036X	706040X	706043X	43965-2	43965-3
603917-3	Trac Lok	4.10	706033-3X	708013	708014	707084X	43965-2	43965-3
603917-4	Standard	4.10	706033-3X	706036X	706040X	706043X	43965-2	43965-3
1979 D-200 & W-200 HD								
603647-2	Standard	4.10	706033-3X	706036X	706040X	706043X	35953	35953
603647-3	Trac Lok	4.10	706033-3X	708013	708014	707084X	35953	35953
603647-6	Trac Lok	4.10	706033-3X	708013	708014	707084X	35953	35953
603647-7	Standard	4.10	706033-3X	706036X	706040X	706043X	35953	35953
1979 MD-300 Dual Wheel HD								
603919-1	Standard	4.10	706033-3X	706036X	706040X	706043X	35953-3	35953-4
603919-2	Standard	4.10	706033-3X	706036X	706040X	706043X	35953-3	35953-4
1979 Rail Maintenance								
603831-1	Trac Lok	4.10	706033-3X	708013	708014	707084X	38378-5	38378-5
1979-84 High Performance Racing Axle (semi-float)								
603971-1	Standard	5.13	706033-9X	706182X	706041X	706702X	71017-1X	71017-2X
603971-2	Powr Lok	5.13	706033-9X	706323X	706175X	706324X	71017-1X	71017-2X
603972-1	Standard	5.38	706033-10X	706182X	706041X	706702X	71017-3X	71017-4X
603972-2	Powr Lok	5.38	706033-10X	706323X	706175X	706324X	71017-3X	71017-4X
1980-82 D-200 & W-200 HD								
603992-1	Trac Lok	4.10	706033-3X	708013	708014	707084X	35953	35953
603992-2	Standard	4.10	706033-3X	706036X	706040X	706043X	35953	35953
603992-3	Standard	4.10	706033-3X	706036X	706040X	706043X	35953	35953
603992-4	Standard	4.10	706033-3X	706036X	706040X	706043X	35953	35953
603992-5	Standard	4.10	706033-3X	708013	708014	707084X	35953	35953
603992-6	Standard	4.56	706033-4X	706037X	706041X	706043X	35953	35953
1980-84 C-300 & B-300 MB-300 HD								
603990-1	Standard	3.54	706033-1X	706036X	706040X	706043X	43965-2	43965-3
603990-2	Standard	4.10	706033-3X	706036X	706040X	706043X	43965-2	43965-3
603990-3	Trac Lok	3.54	706033-1X	708013	708014	707084X	43965-2	43965-3
603990-4	Trac Lok	4.10	706033-3X	708013	708014	707084X	43965-2	43965-3
1980-84 MB-300 Dual Wheel HD								
603993-1	Standard	4.10	706033-3X	706036X	706040X	706043X	35953-3	35953-4
603993-2	Standard	4.56	706033-4X	706037X	706041X	706043X	35953-3	35953-4
1980-88 1/2 D-200 W-200 & D-600								
603989-1	Standard	4.10	706033-3X	706036X	706040X	706043X	43965-1	43965-1
603989-2	Standard	3.54	706033-1X	706036X	706040X	706043X	43965-1	43965-1
603989-3	Trac Lok	3.54	706033-1X	708013	708014	707084X	43965-1	43965-1
603989-4	Trac Lok	4.10	706033-3X	708013	708014	707084X	43965-1	43965-1
603989-5	Standard	4.56	706033-4X	706037X	706041X	706043X	43965-1	43965-1
603989-6	Standard	3.54	706033-1X	706036X	706040X	706043X	43965-1	43965-1
603989-7	Standard	3.54	706033-1X	706037X	706041X	706043X	43965-1	43965-1

(7) See Ring Gear & Pinion Kits in XGI Catalog for ratio & tooth combinations.

(8) See Differential Case Assy Kits in XGI Catalog for spline data & ratios.

Dodge Model 60 /248 Rear Axles

Bill of Material Table

Axle			Axle Kits				Shaft & Joint Assy.	
Bill of Material	Diff. Type	Ratio	Ring Gear & Pinion Kit ⁽⁷⁾	Differential			Right Hand Shaft Assy.	Left Hand Shaft Assy.
				Case Assy. Kit ⁽⁸⁾	Case Kit	Inner Parts Kit		
1980-88 1/2 B-300 Maxivan HD								
603994-1	Standard	3.73	706033-2X	706036X	706040X	706043X	35953-5	35953-6
603994-2	Trac Lok	3.73	706033-2X	708013	708014	707084X	35953-5	35953-6
603994-3	Standard	4.10	706033-3X	706036X	706040X	706043X	35953-5	35953-6
603994-4	Trac Lok	4.10	706033-3X	708013	708014	707084X	35953-5	35953-6
603994-5	Trac Lok	4.10	706033-3X	708013	708014	707084X	35953-5	35953-6
1983-84 D-300 HD								
605082-1	Standard	4.10	706033-3X	706036X	706040X	706043X	43965-1	43965-1
605082-2	Trac Lok	4.10	706033-3X	708013	708014	707084X	43965-1	43965-1
605082-3	Standard	3.54	706033-1X	706036X	706040X	706043X	43965-1	43965-1
1985-85 1/2 D-200 & BD-600								
605224-1	Standard	4.10	706033-3X	706036X	706040X	706043X	43965-1	43965-1
605224-2	Trac Lok	4.10	706033-3X	708013	708053	707084X	43965-1	43965-1
605224-3	Standard	4.10	706033-3X	706036X	706040X	706043X	43965-1	43965-1
1985-88 1/2 B-300 (Van)								
605222-1	Standard	3.54	706033-1X	706036X	706040X	706043X	43965-1	43965-1
605222-2	Trac Lok	3.54	706033-1X	708013	708014	707084X	43965-1	43965-1
605222-3	Standard	4.10	706033-3X	706036X	706040X	706043X	43965-1	43965-1
605222-4	Trac Lok	4.10	706033-3X	708013	708014	707084X	43965-1	43965-1
1985-88 1/2 D-200 HD & D-300 HD								
605225-1	Standard	4.10	706033-3X	706036X	706040X	706043X	43965-1	43965-1
605225-2	Trac Lok	4.10	706033-3X	708013	708014	707084X	43965-1	43965-1
605225-3	Standard	4.10	706033-3X	706036X	706040X	706043X	43965-1	43965-1
605225-4	Trac Lok	4.10	706033-3X	708013	708014	707084X	43965-1	43965-1
1989 B-300 Maxivan HD								
605441-1	Standard	4.09	706033-13X	708010	708011	706043X	35953-5	35953-6
605441-2	Trac Lok	4.09	706033-13X	708013	708014	707084X	35953-5	35953-6
1989-90 1/2 D-300 & D-700 HD - w/ABS								
605368-1	Standard	4.10	706033-3X	708010	708011	706043X	35953	35953
605368-2	Trac Lok	4.10	706033-3X	708013	708014	707084X	35953	35953
605368-3	Standard	4.56	706033-4X	707174X	707175X	706043X	35953	35953
1989-93 1/2 D-200 HD & D-600 H.D - w/ABS								
605370-1	Standard	4.09	706033-13X	708010	708011	706043X	43965-1	43965-1
605370-2	Trac Lok	4.09	706033-13X	708013	708014	707084X	43965-1	43965-1
605370-3	Standard	4.09	706033-13X	708010	708011	706043X	43965-1	43965-1
605370-4	Trac Lok	4.09	706033-13X	708013	708014	707084X	43965-1	43965-1
605370-5	Standard	4.09	706033-13X	708010	708011	706043X	43965-1	43965-1
605370-6	Trac Lok	4.09	706033-13X	708013	708014	707084X	43965-1	43965-1
605370-7	Standard	4.09	706033-13X	708010	708011	706043X	43965-1	43965-1
605370-8	Trac Lok	4.09	706033-13X	708013	708014	707084X	43965-1	43965-1
605371-1	Standard	3.54	706033-1X	708010	708011	706043X	43965-1	43965-1
605371-2	Trac Lok	3.54	706033-1X	708013	708014	707084X	43965-1	43965-1
1989-94 1/2 B-300 HD - w/ABS								
605440-1	Standard	4.09	706033-13X	708010	708011	706043X	43965-2	43965-3
605440-2	Trac Lok	4.09	706033-13X	708013	708014	707084X	43965-2	43965-3
605440-3	Standard	4.09	706033-13X	708010	708011	706043X	43965-2	43965-3
605440-4	Trac Lok	4.09	706033-13X	708013	708014	707084X	43965-2	43965-3

(7) See Ring Gear & Pinion Kits in XGI Catalog for ratio & tooth combinations.

(8) See Differential Case Assy Kits in XGI Catalog for spline data & ratios.

Dodge Model 60 /248 Rear Axles Bill of Material Table

Axle			Axle Kits				Shaft & Joint Assy.	
Bill of Material	Diff. Type	Ratio	Ring Gear & Pinion Kit ⁽⁷⁾	Differential			Right Hand Shaft Assy.	Left Hand Shaft Assy.
				Case Assy. Kit ⁽⁸⁾	Case Kit	Inner Parts Kit		
1991-94 B-300 Maxivan - w/ABS								
605516-1	Standard	4.09	706033-13X	708010	708011	706043X	43965-2	43965-3
605516-2	Trac Lok	4.09	706033-13X	708013	708014	707084X	43965-2	43965-3
605516-3	Standard	4.09	706033-13X	708010	708011	706043X	43965-2	43965-3
1991-95 1/2 D-300 & D-700 HD - w/ABS								
605517-1	Standard	4.09	706033-13X	708010	708011	706043X	43965-1	43965-1
605517-2	Trac Lok	4.09	706033-13X	708013	708014	707084X	43965-1	43965-1
605517-3	Standard	4.56	706033-4X	707174X	707175X	706043X	43965-1	43965-1
605517-4	Standard	4.09	706033-13X	708010	708011	706043X	43965-1	43965-1
605517-5	Trac Lok	4.09	706033-13X	708013	708014	707084X	43965-1	43965-1
605517-6	Standard	4.56	706033-4X	707174X	707175X	706043X	43965-1	43965-1
1994 1/2-97 1/2 B-300 Van - w/ABS								
605710-1	Standard	4.09	706033-13X	708010	708011	706043X	43965-2	43965-3
605710-2	Trac Lok	4.09	706033-13X	708013	708014	707084X	43965-2	43965-3
605711-1	Standard	4.09	706033-13X	708010	708011	706043X	43965-2	43965-3
605711-2	Trac Lok	4.09	706033-13X	708013	708014	707084X	43965-2	43965-3
1998 B-300 Van - w/ABS								
605871-1	Standard	4.09	708021-1	708010	708011	706043X	43965-2	43965-3
605965-1	Standard	4.09	708021-1	708010	708011	706043X	43965-2	43965-3
605965-2	Trac Lok	4.09	708021-1	708013	708014	707084X	43965-2	43965-3
606108-1	Standard	4.09	708021-1	707120X	707121X	706043X	43965-2	43965-3
606108-2	Trac Lok	4.09	708021-1	707090X	707123X	707084X	43965-2	43965-3
1998-98 1/2 B-300 Van - w/ABS								
606058-1	Standard	4.09	706033-13X	708010	708011	706043X	43965-2	43965-3
606058-2	Trac Lok	4.09	706033-13X	708013	708014	707084X	43965-2	43965-3
606059-1	Standard	4.09	706033-13X	708010	708011	706043X	43965-2	43965-3

(7) See Ring Gear & Pinion Kits in XGI Catalog for ratio & tooth combinations.

(8) See Differential Case Assy Kits in XGI Catalog for spline data & ratios.

Dodge Model 60 /248 Rear Axles Variable Parts Listing

Kits & Parts - Use With All Applications							
Description & Item Number (Refer to "Exploded View" at the front of this section)			Bills of Material				
			603647	603831 ⁽¹⁰⁾	603917	603919	603920
1	End Yoke Assembly (inc 9)	10	— ⁽⁹⁾	— ⁽⁹⁾	— ⁽⁹⁾	— ⁽⁹⁾	— ⁽¹¹⁾
2	KIT – Carrier Cover	-	707183X	707183X	707183X	707183X	707183X
3	Carrier Cover	13	43788	43788	43788	43788	43788
4	Bolt – Drive Gear (qty 12)	22	30266	30266	30266	30266	30266
5	Seal – Hub	32	43146	—	40709	—	43146
6	Spindle Nut	36	35270	—	35270	35270	35270
7	Lockwasher / Locking Wedge	37	35269	—	35269	35269	35269
			603971 603972	603989 ⁽¹⁰⁾	603990	603992 ⁽¹⁰⁾	603993
1	End Yoke Assembly (inc 9)	10	—	— ⁽⁹⁾	— ⁽⁹⁾	— ⁽⁹⁾	— ⁽¹¹⁾
2	KIT – Carrier Cover	-	707183X	707183X	707183X	707183X	707183X
3	Carrier Cover	13	43788	43788	43788	43788	43788
4	Bolt – Drive Gear (qty 12)	22	30266	30266	30266	30266	30266
5	Seal – Hub	32	—	—	40709	—	—
6	Spindle Nut	36	—	—	39695	—	39695
7	Lockwasher / Locking Wedge	37	—	—	41373	—	41373
			603994 ⁽¹⁰⁾	605082	605222 ⁽¹⁰⁾	605224 ⁽¹⁰⁾ 605225 ⁽¹⁰⁾	605368
1	End Yoke Assembly (inc 9)	10	— ⁽⁹⁾	— ⁽¹¹⁾	— ⁽¹¹⁾	— ⁽⁹⁾	— ⁽¹¹⁾
2	KIT – Carrier Cover	-	707183X	707183X	707183X	707183X	707182X
3	Carrier Cover	13	43788	43788	43788	43788	43787
4	Bolt – Drive Gear (qty 12)	22	30266	30266	30266	30266	40638
5	Seal – Hub	32	—	40709	—	—	43146
6	Nut – Spindle	36	—	39695	—	—	39695
7	Lockwasher / Locking Wedge	37	—	41373	—	—	41373
			605370 605371	605440	605441	605516	605517
1	End Yoke Assembly (inc 9)	10	— ⁽⁹⁾	— ⁽¹¹⁾	— ⁽⁹⁾	— ⁽⁹⁾	— ⁽⁹⁾
2	KIT – Carrier Cover	-	707182X	707183X	707183X	707183X	707182X
3	Cover – Carrier	13	43787	43788	43788	43788	43788
4	Bolt – Drive Gear (qty 12)	22	43146	40638	40638	40638	40638
5	Seal – Hub	32	40709	40709	43146	43146	43146
6	Spindle Nut	36	39695	39695	39695	39695	39695
7	Lockwasher / Locking Wedge	37	41373	41373	41373	41373	41373
			605710	605711 605871	605965	606058	606059 606108
1	End Yoke Assembly (inc 9)	10	— ⁽⁹⁾	3-4-11891-1X	— ⁽⁹⁾	2-4-7681-1X	3-4-11891-1X
2	KIT – Carrier Cover	-	707183X	707183X	707183X	707183X	707183X
3	Carrier Cover	13	43787	43788	43788	43788	43788
4	Bolt – Drive Gear (qty 12)	22	40638	40638	40638	40638	40638
5	Seal – Hub	32	40709	47507	35313	40709	47507
6	Spindle Nut	36	47163	47163	47163	47163	47163
7	Lockwasher / Locking Wedge	37	46545	46545	46545	46545	46545

(9) Must identify yoke series used in vehicle; Service 7260 Series with 1310 Series using 2-4-8391-1X, 5-353X and 2-70-18X. Service 7290 Series with 2-4-7681-1X. Service 1410 Series with 3-4-11891-1X.

(10) Contact vehicle manufacturer for all wheel end components

(11) 7260 Series yoke used in vehicle. Service 1310 Series using 2-4-8391-1X, 5-353X and 2-70-18X.