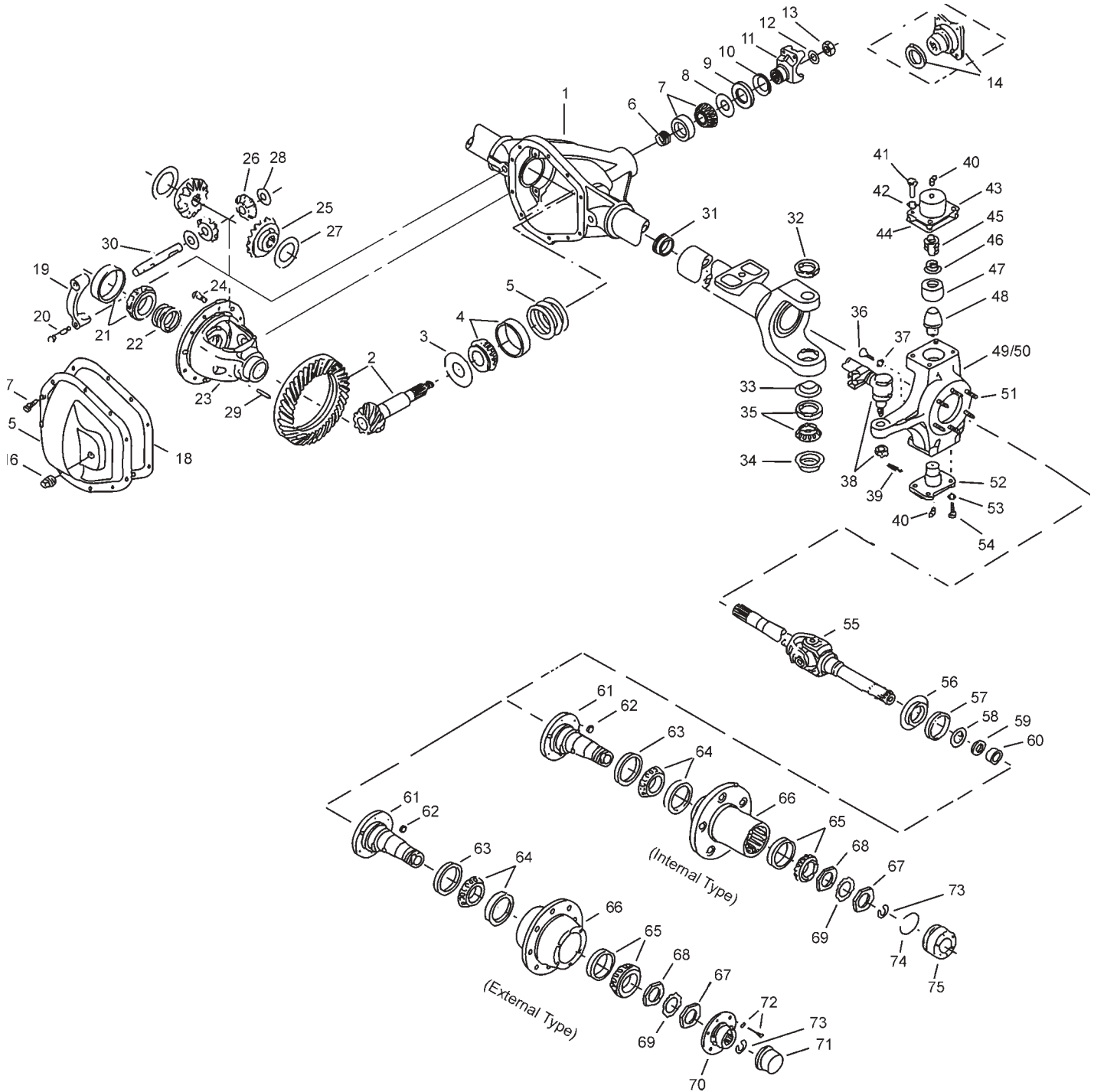


Dodge / Chrysler 1979-1993

Model 60 /248 Front Axles for

D-600 and D-700

Dodge Model 60 /248 Front Axles Exploded View



Dodge Model 60 /248 Front Axles Parts Listing

ITEM NO.	PART NUMBER	DESCRIPTION	ITEM NO.	PART NUMBER	DESCRIPTION
1	— ⁽³⁾	Housing – Axle Service	37	500381-5	Jam Nut
2	— ⁽¹⁾	Drive Pinion & Gear Assembly	38	— ⁽⁵⁾	Tie Rod Assembly
3	34643	Slinger – Inner Pinion Bearing	39	— ⁽⁵⁾	Cotter Pin
4	706046X	KIT – Inner Pinion Bearing	40	500175-4	Lube Fitting
5	— ⁽⁴⁾	Inner Pinion Shims (see shim packages)	41	30875	Nut – Hex Tapered
6	— ⁽⁴⁾	Outer Pinion Shims (see shim packages)	42	—	Lockwasher – King Pin Cap (upper) (not required on this model)
	708020	PKG – Diff & Pinion Bearing Shim (inc items 5,6,13,18,22)	43	38520	Arm – Steering (LH only)
	706359X	PKG – Pinion Bearing Shim (inc items 5,6,12,13,18)	44	37307	Gasket – King Pin Cap
7	706045X	KIT – Outer Pinion Bearing	45	620132	Cap – King Pin (Upper – RH only)
8	42737	Thrustwasher – Bearing	46	37300	Spring – Pressure
9	42449	Seal – Pinion Oil	47	620180	Spring Retainer
10	34592	Slinger – End Yoke	48	41886	King Pin Bushing
11	— ⁽²⁾	End Yoke Assembly (inc 10)	49	37302	King Pin
12	30275	Washer – Pinion Nut	50	— ⁽³⁾	Right Knuckle
13	30271	Pinion Nut	51	— ⁽³⁾	Left Knuckle
14	—	Companion Flange Assembly	52	37879	Bolt – Hex
	— ⁽²⁾	KIT – Carrier Cover (inc items 15, 16, 17)	53	37299	King Pin Bearing Cap – Lower
15	— ⁽²⁾	Carrier Cover	54	500357-13	Lockwasher (King Pin Cap – lower)
16	43180	Plug – Carrier Cover	55	500412-13	Bolt – Hex (King Pin Cap – lower)
17	34822	Bolt – Carrier Cover (qty 10)	56	907967-1	Shaft & Joint Assembly – RH
18	34687	Gasket – Carrier Cover		907967-2	Shaft & Joint Assembly – LH
19	— ⁽³⁾	Differential Bearing Cap	57	37308	Slinger – Spindle Yoke
20	48632-1	Bolt – Differential Bearing Cap		700014	KIT – Spindle Seal & Bearing (inc items 57, 58, 59, 60)
21	706047X	KIT – Differential Bearing	58	700013	KIT – Spindle (inc items 57, 58, 59, 60, 61)
22	708012	PKG – Differential Brg Shim (inc 18)	59	620062	Oil Seal
23	— ⁽¹⁾	Case – Differential	60	37312	Spacer – Wheel Bearing Spindle
24	30266	Bolt – Drive Gear (qty 12)	61	37311	Oil Seal (block-vee)
25	35625	Gear – Differential	62	620063	Needle Bearing Assembly
26	34367	Pinion – Differential	63	620061	Spindle – Wheel Bearing
27	34729	Thrustwasher – Differential Gear	64	36880	Nut – Brake Mounting
28	34730	Thrustwasher – Differential Pinion	65	48816	Oil Seal
29	44810	Lock – Differential Shaft	66	706411X	KIT – Inner Wheel Bearing
30	30263	Shaft – Differential	67	706074X	KIT – Outer Wheel Bearing
31	36487	Seal & Guide Tube	68	— ⁽³⁾	Wheel Hub
	706395X	KIT – King Pin Parts (Lower) (inc items 32, 33, 34, 35)	69	— ⁽²⁾	Spindle Nut
32	620058	King Pin Seal (Upper)	70	— ⁽²⁾	Spindle Nut or Nut/Pin Assembly
33	37305	Grease Retainer	71	— ⁽²⁾	Wheel Bearing Lockwasher
34	41777	Oil Seal	72	— ⁽²⁾	Axle Drive Flange
35	706150X	KIT – King Pin Bearing (Lower)	73	— ⁽²⁾	Hub Cap
36	620143-3	Stop Screw	74	37730	Screw or Screw/Lockwasher Assy
			75	— ⁽³⁾	Snap Ring (small)
					Snap Ring (large)
					Hub Lock Assembly

(1) See "Bill of Material Table" on next page

(2) See "Variable Parts Table" within this section

(3) Contact Vehicle Manufacturer

(4) Not Sold Separately

(5) See Spicer Chassis Catalog for part number and additional steering parts

Dodge Model 60 /248 Front Axles

Bill of Material Table

Axle			Axle Kits				Shaft & Joint Assy.	
Bill of Material	Diff. Type	Ratio	Ring Gear & Pinion Kit ⁽⁷⁾	Differential			Right Hand Shaft Assy.	Left Hand Shaft Assy.
				Case Assy. Kit ⁽⁸⁾	Case Kit	Inner Parts Kit		
1979-80 D-600								
603643-1	Standard	4.10	706033-3X	706180X	706040X	706702X	907967-1	907967-2
603643-2	Standard	4.88	706033-5X	706182X	706041X	706702X	907967-1	907967-2
603643-3	Standard	4.88	706033-5X	706182X	706041X	706702X	907967-1	907967-2
603643-4	Standard	4.10	706033-3X	706180X	706040X	706702X	907967-1	907967-2
603643-5	Standard	4.88	706033-5X	706182X	706041X	706702X	907967-1	907967-2
603643-6	Standard	4.88	706033-5X	706182X	706041X	706702X	907967-1	907967-2
603643-8	Standard	4.10	706033-3X	706180X	706040X	706702X	907967-1	907967-2
603643-9	Standard	5.86	706033-6X	706182X	706041X	706702X	907967-1	907967-2
603643-10	Standard	4.10	706033-3X	706180X	706040X	706702X	907967-1	907967-2
603643-11	Standard	4.56	706033-4X	706182X	706041X	706702X	907967-1	907967-2
603643-12	Standard	4.56	706033-4X	706182X	706041X	706702X	907967-1	907967-2
1981-85 D-600 & D-700								
610135-1	Standard	4.10	706033-3X	706180X	706040X	706702X	907967-1	907967-2
610135-2	Standard	4.56	706033-4X	706182X	706041X	706702X	907967-1	907967-2
610135-3	Standard	4.56	706033-4X	706182X	706041X	706702X	907967-1	907967-2
610135-4	Standard	4.88	706033-5X	706182X	706041X	706702X	907967-1	907967-2
1985-88 D-600 & D-700								
610236-1	Standard	4.10	706033-3X	706180X	706040X	706702X	907967-1	907967-2
610236-2	Standard	4.56	706033-4X	706182X	706041X	706702X	907967-1	907967-2
610236-3	Standard	4.56	706033-4X	706182X	706041X	706702X	907967-1	907967-2
610236-4	Standard	4.88	706033-5X	706182X	706041X	706702X	907967-1	907967-2
1989 D-600 & D-700								
610332-1	Standard	4.10	706033-3X	706180X	706040X	706702X	907967-1	907967-2
610332-2	Standard	4.56	706033-4X	706182X	706041X	706702X	907967-1	907967-2
610332-3	Standard	4.88	706033-5X	706182X	706041X	706702X	907967-1	907967-2
610332-4	Standard	4.10	706033-3X	706180X	706040X	706702X	907967-1	907967-2
1989-90 D-600								
610341-1	Standard	4.10	706033-3X	706180X	706040X	706702X	907967-1	907967-2
610341-2	Standard	4.56	706033-4X	706182X	706041X	706702X	907967-1	907967-2
610341-3	Standard	4.88	706033-5X	706182X	706041X	706702X	907967-1	907967-2
610341-4	Standard	4.10	706033-3X	706180X	706040X	706702X	907967-1	907967-2
1991-91 1/2 D-600								
610357-1	Standard	4.10	706033-3X	706180X	706040X	706702X	907967-1	907967-2
610357-2	Standard	4.56	706033-4X	706182X	706041X	706702X	907967-1	907967-2
610357-3	Standard	4.88	706033-5X	706182X	706041X	706702X	907967-1	907967-2
610357-4	Standard	4.10	706033-3X	706180X	706040X	706702X	907967-1	907967-2
610357-5	Standard	3.54	706033-1X	706180X	706040X	706702X	907967-1	907967-2
610357-6	Standard	3.54	706033-1X	706180X	706040X	706702X	907967-1	907967-2
610357-7	Standard	4.56	706033-4X	706182X	706041X	706702X	907967-1	907967-2
1992 D-600 (Dead Front)								
610398-2	Standard	4.56	-	-	-	-	-	-
610398-4	Standard	4.10	-	-	-	-	-	-
610398-5	Standard	4.56	-	-	-	-	-	-
610398-6	Standard	3.54	-	-	-	-	-	-
610398-7	Standard	4.56	-	-	-	-	-	-

(7) See Ring Gear & Pinion Kits in XGI Catalog for ratio & tooth combinations.

(8) See Differential Case Assy Kits in XGI Catalog for spline data & ratios.

Dodge Model 60 /248 Front Axles Bill of Material Table

Axle			Axle Kits				Shaft & Joint Assy.	
Bill of Material	Diff. Type	Ratio	Ring Gear & Pinion Kit ⁽⁷⁾	Differential			Right Hand Shaft Assy.	Left Hand Shaft Assy.
				Case Assy. Kit ⁽⁸⁾	Case Kit	Inner Parts Kit		
1992-92 1/2 D-600 & D-700								
610430-1	Standard	4.56	706033-4X	706182X	706041X	706702X	907967-1	907967-2
610430-2	Standard	4.10	706033-3X	706180X	706040X	706702X	907967-1	907967-2
610430-3	Standard	3.54	706033-1X	706180X	706040X	706702X	907967-1	907967-2
610430-4	Standard	4.10	706033-3X	706180X	706040X	706702X	907967-1	907967-2
1993 D-600 & D-700								
610405-1	Standard	4.10	706033-3X	706180X	706040X	706702X	907967-1	907967-2
610405-2	Standard	4.56	706033-4X	706182X	706041X	706702X	907967-1	907967-2
610405-4	Standard	4.10	706033-3X	706180X	706040X	706702X	907967-1	907967-2
610405-5	Standard	3.54	706033-1X	706180X	706040X	706702X	907967-1	907967-2
610405-6	Standard	3.54	706033-1X	706180X	706040X	706702X	907967-1	907967-2
610405-7	Standard	4.56	706033-4X	706182X	706041X	706702X	907967-1	907967-2
610405-8	Standard	3.54	706033-1X	706180X	706040X	706702X	907967-1	907967-2
610405-9	Standard	4.10	706033-3X	706180X	706040X	706702X	907967-1	907967-2
610405-10	Standard	4.56	706033-4X	706182X	706041X	706702X	907967-1	907967-2
610405-11	Standard	3.54	706033-1X	706180X	706040X	706702X	907967-1	907967-2
610405-12	Standard	4.10	706033-3X	706180X	706040X	706702X	907967-1	907967-2
610405-13	Standard	4.56	706033-4X	706182X	706041X	706702X	907967-1	907967-2

(7) See Ring Gear & Pinion Kits in XGI Catalog for ratio & tooth combinations.

(8) See Differential Case Assy Kits in XGI Catalog for spline data & ratios.

Dodge Model 60 /248 Front Axles Variable Parts Listing

Kits & Parts - Use With All Applications							
Description & Item Number (Refer to "Exploded View" at the front of this section)			Bills of Material				
			603643	610135 610136	610332	610341 610357	610398
1	End Yoke Assembly (inc 10)	11	2-4-3801X	2-4-8391-1X	2-4-8391-1X	2-4-8391-1X	—
2	KIT – Carrier Cover	-	707182X	707182X	707229X	707229X	—
3	Carrier Cover	15	42799-2	42799-2	43600-1	43600-1	—
4	Spindle Nut	67	35270	35270	35270	621027	—
5	Spindle Nut or Nut/Pin Assembly	68	35270	35270	35270	660568	—
6	Wheel Bearing Lockwasher	69	35269	35269	35269	621028	—
7	Axle Drive Flange	70	37313	—	—	—	—
8	Hub Cap	71	32001	—	—	—	—
9	Screw or Screw/Lockwasher Assy	72	37734	37734	37734	45886	—
10	Snap Ring (large)	74	—	—	—	620097	—
			610405				
			610430				
1	End Yoke Assembly (inc 10)	11	2-4-8391-1X				
2	KIT – Carrier Cover	-	707229X				
3	Carrier Cover	15	43600-1				
4	Spindle Nut	67	621027				
5	Spindle Nut or Nut/Pin Assembly	68	660568				
6	Wheel Bearing Lockwasher	69	621028				
7	Axle Drive Flange	70	—				
8	Hub Cap	71	—				
9	Screw or Screw/Lockwasher Assy	72	45886				
10	Snap Ring (large)	74	620097				