

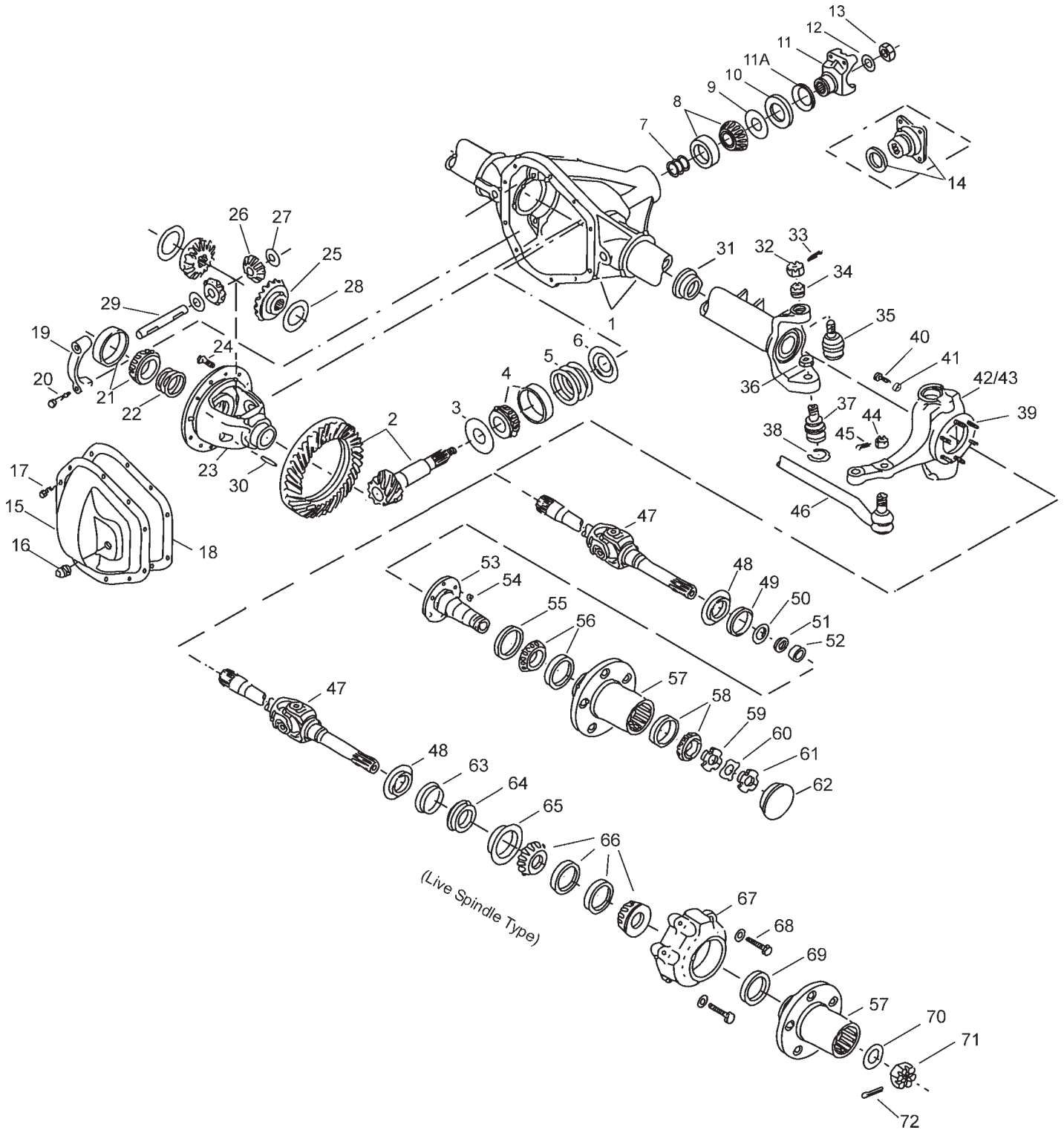
## **Dodge / Chrysler 1979-1989**

### **Model 44 /216 Front Axles for**

**D-600 (Export)**

**W-100, W-200**

# Dodge Model 44 /216 Front Axles Exploded View



# Dodge Model 44 /216 Front Axles Parts Listing

ITEM NO.	PART NUMBER	DESCRIPTION	ITEM NO.	PART NUMBER	DESCRIPTION
1	— <sup>(3)</sup>	Housing – Axle Service	36	35566	Lock Nut
2	— <sup>(1)</sup>	Drive Pinion & Gear Assembly	37	40113	Socket Assembly – Lower
3	30764	Slinger – Inner Pinion Bearing	38	35928	Snap Ring
4	706031X	KIT – Inner Pinion Bearing	39	36326-1	Bolt – Hex (qty 6)
	706376X	PKG – Diff & Pinion Bearing Shim (inc items 5, 7, 12, 13, 18, 22)	40	620143-3	Stop Screw
	706358X	PKG – Pinion Bearing Shim (inc items 5, 7, 12, 13, 18)	41	500381-5	Jam Nut
5	— <sup>(4)</sup>	Inner Pinion Shims (see shim packages)	42	— <sup>(3)</sup>	Right Knuckle
6	30765	Baffle – Pinion Bearing	43	— <sup>(3)</sup>	Left Knuckle
7	— <sup>(4)</sup>	Outer Pinion Shims (see shim packages)	44	— <sup>(5)</sup>	Nut – Hex Slotted
8	706030X	KIT – Outer Pinion Bearing	45	— <sup>(5)</sup>	Cotter Pin
9	13575	Slinger – Outer Pinion Bearing	46	— <sup>(5)</sup>	Tie Rod Assembly
10	39118	Seal – Pinion Oil	47	706184X	KIT – Steering Arm
11	— <sup>(3)</sup>	End Yoke Assembly (inc 11A)	48	— <sup>(1)</sup>	Shaft & Joint Assembly
11A	— <sup>(3)</sup>	Slinger – End Yoke		— <sup>(2)</sup>	Slinger – Spindle Yoke
12	30186	Washer – Pinion Nut	49	38128	KIT – Spindle Seal & Bearing (inc items 49, 50, 51, 52)
13	30185	Pinion Nut	50	36361	Oil Seal
14	—	Companion Flange Assembly	51	38106	Oil Seal (block-vee)
	— <sup>(2)</sup>	KIT – Carrier Cover (inc items 15, 16, 17, 18)	52	550759	Spacer – Wheel Bearing Spindle
15	— <sup>(2)</sup>	Carrier Cover	53	— <sup>(2)</sup>	Needle Bearing Assembly
16	36472	Plug – Carrier Cover	54	35704	Spindle – Wheel Bearing
17	34279	Bolt – Carrier Cover	55	36366	Brake Mounting Nut
18	34685	Gasket – Carrier Cover	56	706690X	Oil Seal
19	— <sup>(3)</sup>	Differential Bearing Cap	57	— <sup>(3)</sup>	KIT – Inner Wheel Bearing
20	48632-1	Bolt – Differential Bearing Cap	58	706111X	Wheel Hub
21	706032X	KIT – Differential Bearing	59	21588X	KIT – Outer Wheel Bearing
22	706086X	PKG – Diff Bearing Shim (inc 18)	60	— <sup>(2)</sup>	Nut & Pin Assembly – Inner Lock
23	— <sup>(1)</sup>	Case – Differential	61	31139	Lock Nut
24	30187	Bolt – Drive Gear (qty 10)	62	44328	Nut – Wheel Bearing Adjusting
25	31487	Gear – Differential	63	36999	Hub Cap
26	17717	Pinion – Differential	64	38415	Brake Dust Shield
27	13338-3	Thrustwasher – Differential Pinion	65	38416	Oil Seal
28	32121	Thrustwasher – Differential Gear	66	565963	U-Cup Seal
29	39194	Shaft – Differential	67	29908X	Bearing Assembly
30	13449	Lock – Differential Shaft	68	37709	Wheel Bearing Retainer Assembly
31	— <sup>(2)</sup>	Seal & Guide Tube	69	37003	Screw - Flange Head
	706116X	KIT – Socket Assembly (inc items 32,33,34,35,36,37,38)	70	30186-2	Oil Seal
32	44101	Nut – Hex Slotted	71	46085	Shaft Nut Washer
33	500024-6	Cotter Pin	72	500025-11	Slotted Nut
34	35417	Adjusting Split Ring		706555X	Cotter Pin
35	40112	Socket Assembly – Upper		706554X	KIT – Wheel End (Live Spindle) (inc items 48, 64, 65, 66, 69)
					KIT – Wheel End Brg (Live Spindle) (inc items 48, 64, 65, 66, 67)

(1) See "Bill of Material Table" on next page

(2) See "Variable Parts Table" within this section

(3) Contact Vehicle Manufacturer

(4) Not Sold Separately

(5) See Spicer Chassis Catalog for part number and additional steering parts

# Dodge Model 44 /216 Front Axles

## Bill of Material Table

Axle			Axle Kits				Shaft & Joint Assy.	
Bill of Material	Diff. Type	Ratio	Ring Gear & Pinion Kit <sup>(7)</sup>	Differential			Right Hand Shaft Assy.	Left Hand Shaft Assy.
				Case Assy. Kit <sup>(8)</sup>	Case Kit	Inner Parts Kit		
<b>1979 W-100</b>								
610027-1	Standard	3.23	706017-16X	706020X	706024X	706027X	28478-1X	28478-2X
610027-2	Standard	3.54	706017-3X	706020X	706024X	706027X	28478-1X	28478-2X
610027-3	Standard	3.92	706017-11X	706021X	706025X	706027X	28478-1X	28478-2X
<b>1979 W-200</b>								
610028-1	Standard	4.09	706017-5X	706021X	706025X	706027X	28478-3X	28478-4X
610028-2	Standard	3.54	706017-3X	706020X	706024X	706027X	28478-3X	28478-4X
<b>1980 W-100</b>								
610076-5	Standard	2.94	700025-7	706020X	706024X	706027X	660599-1	660599-2
610076-6	Standard	3.23	706017-16X	706020X	706024X	706027X	660599-1	660599-2
610076-7	Standard	3.54	706017-3X	706020X	706024X	706027X	660599-1	660599-2
610076-8	Standard	2.72	706017-19X	706020X	706024X	706027X	660599-1	660599-2
610076-9	Standard	2.94	700025-7	706020X	706024X	706027X	660599-1	660599-2
610076-10	Standard	3.23	706017-16X	706020X	706024X	706027X	660599-1	660599-2
610076-11	Standard	3.54	706017-3X	706020X	706024X	706027X	660599-1	660599-2
<b>1980 W-200</b>								
610077-3	Standard	3.54	706017-3X	706020X	706024X	706027X	660599-3	660599-4
610077-4	Standard	4.09	706017-5X	706021X	706025X	706027X	660599-3	660599-4
610077-5	Standard	3.54	706017-3X	706020X	706024X	706027X	660599-3	660599-4
610077-6	Standard	4.09	706017-5X	706021X	706025X	706027X	660599-3	660599-4
<b>1980-83 W-200 (Dead Front)</b>								
610084	-	-	-	-	-	-	-	-
<b>1981-84 W-100</b>								
610127-1	Standard	2.94	700025-7	706020X	706024X	706027X	660599-1	660599-2
610127-2	Standard	3.23	706017-16X	706020X	706024X	706027X	660599-1	660599-2
610127-3	Standard	3.54	706017-3X	706020X	706024X	706027X	660599-1	660599-2
<b>1981-84 W-200</b>								
610128-1	Standard	3.54	706017-3X	706020X	706024X	706027X	660599-3	660599-4
610128-2	Standard	4.09	706017-5X	706021X	706025X	706027X	660599-3	660599-4
<b>1985-89 D-600 (Export)</b>								
610160-1	Standard	3.92	706017-11X	706021X	706025X	706027X	71628-1X	71628-2X
610160-2	Standard	3.54	706017-3X	706020X	706024X	706027X	71628-1X	71628-2X
610160-3	Standard	3.23	706017-16X	706020X	706024X	706027X	71628-1X	71628-2X

(7) See Ring Gear & Pinion Kits in XGI Catalog for ratio & tooth combinations.

(8) See Differential Case Assy Kits in XGI Catalog for spline data & ratios.

## Variable Parts Listing

Kits & Parts - Use With All Applications								
Description & Item Number (Refer to "Exploded View")			Bills of Material					
			610027 610028	610076 610077	610084	610127 610128	610160	
1	KIT – Carrier Cover	-	700107	700107	700107	700107	700107	706154X
2	Carrier Cover	15	620417	620417	620417	620417	620417	620222
3	Seal & Guide Tube	31	620216	620216	—	620216	620216	620216
4	Slinger – Spindle Yoke	48	38414	36364	36364	36364	36364	36364
5	KIT – Spindle	-	—	—	—	706570X	706560X	
6	Spindle – Wheel Bearing	53	—	38452	38428	38428	38428	
7	Lock Nut	60	—	39909	36569	39909	39909	—